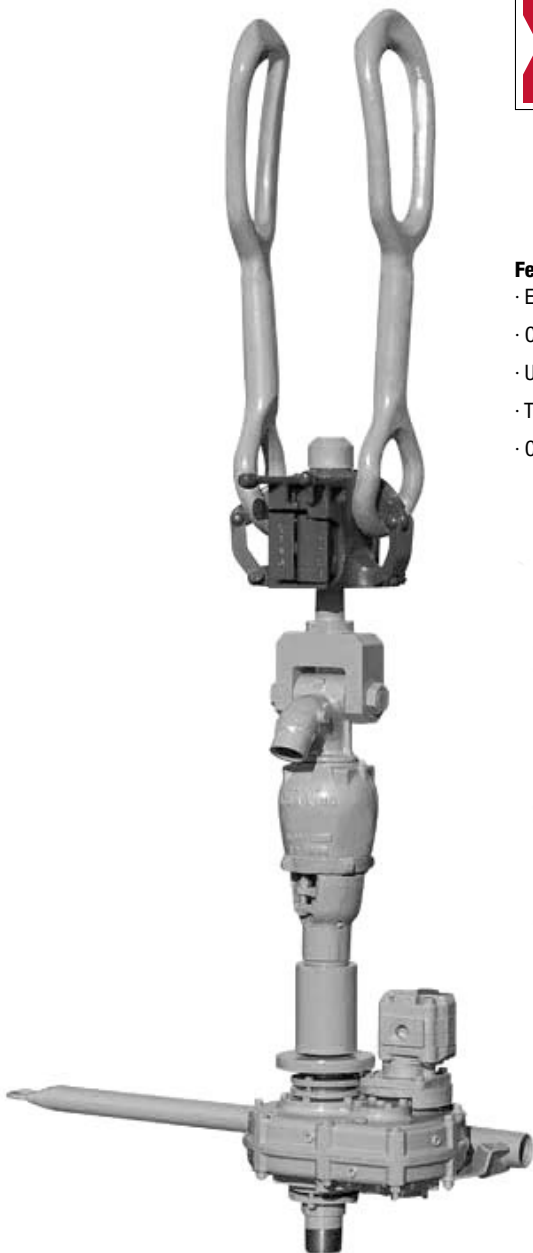


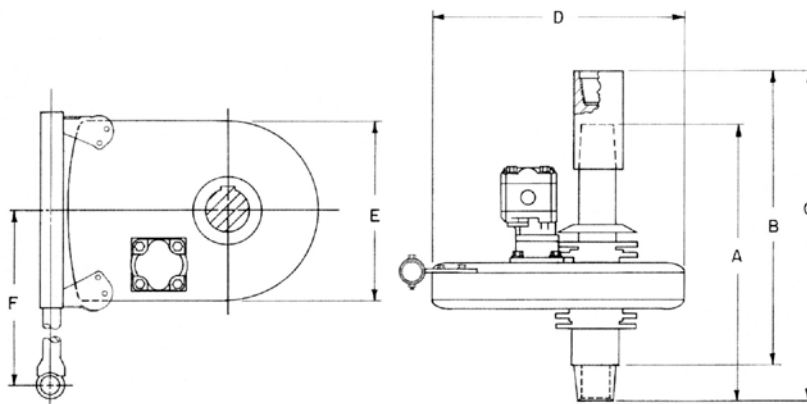
# Power Sub

515V, 615V



### Features in Brief

- Economical way to rotate your string of pipe for drilling and milling of light jobs at shallower depths
- Combination of Power Sub with King's long time proven swivels make a match for small to medium jobs
- Utilizes the hydraulics of the rig or like equipment on location
- The Power Sub and swivel can be the tool to save the expense and unnecessary equipment
- Can be combined with hydraulic power united to be self contained for quick and easy application



Model	DIMENSIONS						Top Sub Threads	Lower Quill Threads
	A	B	C	D	E	F		
515 V	18"	19 1/8"	23 1/8"	18 5/16"	13 1/8"	36	3 1/2 API 8V LH 4 1/2 API 8V LH (OPT)	2 7/8 EUE 8RD RH
615 V	20"	24 1/4"	27 1/4"	28 1/4"	20 1/4"	36	4 1/2 API REG LH 4 1/2 API 8V LH (OPT)	3 1/2 EUE 8RD RH

### Dimensional Data

Model	Gear Box Ratio	HYD. Motor Porting	Weight Dry, lbs.	MIN Fluid Passage	MAX Static Load Rating, lbs.	MAX Torque	MAX Quill Speed
515 V	15.38:1	1 5/8-12 SAE O-RING PORT	263	1 1/2"	63,000	1410 FT-LB @ 2000 PSI	130 RPM @ 36 GPM
615 V	15.33:1	1 1/2 SAE O-RING PORT	362	2"	110,000	2478 FT-LB @ 2000 PSI	130 RPM @ 60 GPM